

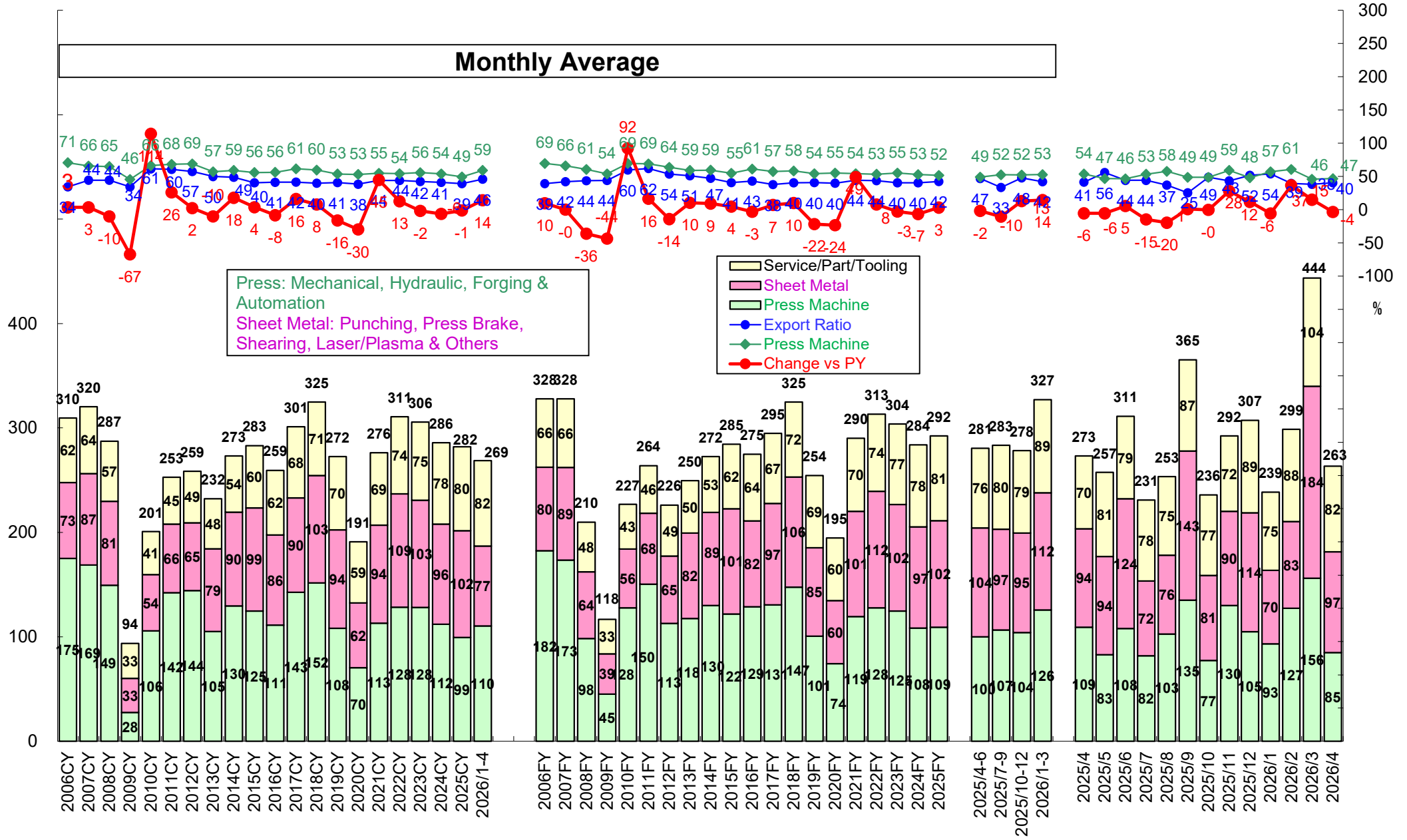
Order Entry Trend of JFMA Member Corporations (Monthly Business Statistics)

May 13, 2026

Japan Forming Machinery Association

Unit: 100 Mil. JPY

Monthly Average



Order Entry Overview of Metal Forming Machines (JFMA Member Corporations)

May 13, 2026

Value: 100 Mil. JPY

Year/Mon	Total Order (Japan + Export)										Press Machine + Sheet Metal Machine = Total Machines																																		
	Unit		Value		Press Machine			JPN			Export			Servo Ratio			Sheet Metal Machine			JPN			Export			Service, etc.			JPN			Export			Total Machines			Japan			Export			Export Ratio	Press Ratio
					% vs PY	% vs PY	% vs PY	% vs PY	% vs PY	% vs PY	% vs PY	% vs PY	% vs PY	% vs PY	% vs PY	% vs PY	% vs PY	% vs PY	% vs PY	% vs PY	% vs PY	% vs PY	% vs PY	% vs PY	% vs PY	% vs PY	% vs PY	% vs PY	% vs PY	% vs PY	% vs PY	% vs PY	% vs PY	% vs PY	% vs PY	% vs PY	% vs PY	% vs PY	% vs PY						
	Value	Value	Value	Value	Value	Value	Value	Value	Value	Value	Value	Value	Value	Value	Value	Value	Value	Value	Value	Value	Value	Value	Value	Value	Value	Value	Value	Value	Value	Value	Value	Value	Value	Value	Value	Value	Value								
2003CY	9,254	232,468		5,673	139,405		20.1	27.8	10.3	4.0	3,580	46,563		20.0	97.8	46,489		25.7	25.7	25.7	11,728	233,809		25.7	7,951	138,848		25.5	3,776	94,957		26.1	40.6	71.6											
2004CY	11,728	292,264	25.7	6,997	167,395	20.1	27.8	10.3	5.2	4,734	66,408	42.6	20.0	97.8	58,448	25.7	25.7	25.7	11,728	233,809	25.7	7,951	138,848	25.5	3,776	94,957	26.1	40.6	71.6																
2005CY	11,229	359,588	23.0	6,498	214,032	27.9	21.0	37.8	18.1	4,730	73,632	10.9	17.0	1.9	71,911	23.0	23.0	23.0	11,229	287,669	23.0	7,679	166,468	19.9	3,549	121,195	27.6	42.1	74.4																
2006CY	12,514	371,616	3.3	7,368	209,932	-1.9	18.2	-27.7	11.5	5,148	87,355	18.6	14.8	25.1	74,317	3.3	3.3	3.3	12,514	297,291	3.3	8,709	195,216	17.3	3,804	102,072	-15.8	34.3	70.6																
2007CY	12,669	384,339	3.4	6,887	202,497	-3.5	-19.8	30.5	17.6	5,782	104,967	20.2	7.7	39.5	76,864	3.4	3.4	3.4	12,669	307,468	3.4	7,914	171,201	-12.3	4,758	136,263	33.5	44.3	65.9																
2008CY	9,762	344,728	-10.3	5,158	179,102	-11.6	-10.8	-12.5	18.5	4,604	96,672	-7.9	-9.4	-6.1	68,941	-10.3	-10.3	-10.3	9,762	275,780	-10.3	5,661	153,511	-10.3	4,103	122,262	-10.3	44.3	64.9																
2009CY	3,719	112,441	-67.4	1,783	33,013	-81.6	-77.4	-87.0	18.9	1,936	39,276	-59.4	-52.7	-67.0	40,132	-41.8	-38.8	-53.6	3,719	72,287	-73.8	2,153	47,474	-69.1	1,566	24,815	-79.7	34.3	45.7																
2010CY	6,858	240,809	114.2	3,769	126,791	284.1	66.2	782.2	22.0	3,089	64,779	64.9	46.9	94.9	49,240	22.7	17.9	47.6	6,858	191,569	165.0	3,380	74,158	56.2	3,478	117,411	373.1	61.3	66.2																
2011CY	7,262	303,408	26.0	3,557	170,483	34.5	55.1	25.6	20.7	3,705	78,890	21.8	9.5	37.2	54,037	9.7	5.4	28.2	7,262	249,372	30.2	3,568	98,584	32.9	3,694	150,788	28.4	60.5	68.4																
2012CY	6,630	310,375	2.3	3,338	173,093	1.5	4.8	-0.2	23.5	3,292	77,935	-1.2	14.8	-17.2	59,347	9.8	5.1	26.1	6,630	251,028	0.7	3,696	107,250	8.8	2,934	143,778	-4.6	57.3	69.0																
2013CY	6,042	255,574	-10.3	2,661	116,609	-26.5	-17.6	-31.3	21.6	3,381	86,616	20.7	28.1	10.5	52,352	-4.2	0.7	-18.2	6,042	203,226	-11.8	3,430	99,708	1.9	2,612	103,516	-21.8	50.9	57.4																
2014CY	7,796	327,886	17.7	3,663	155,603	23.4	40.9	11.2	37.0	4,133	107,535	13.4	5.7	26.0	64,747	12.5	10.3	19.9	7,796	263,138	19.1	4,561	135,346	22.2	3,235	127,794	16.0	48.6	59.1																
2015CY	7,609	339,695	3.6	3,537	149,633	-3.8	5.2	-11.8	27.6	4,072	118,592	10.3	33.9	-22.4	71,467	10.4	9.7	12.5	7,609	268,227	1.9	5,028	160,267	18.4	2,581	107,957	-15.5	40.2	55.8																
2016CY	6,957	311,265	-8.4	3,248	133,334	-10.9	-8.9	-13.0	32.2	3,709	103,521	-12.7	-17.3	-1.7	74,412	4.1	6.0	-1.7	6,957	236,854	-11.7	4,419	138,953	-13.3	2,538	97,901	-9.3	41.3	56.3																
2017CY	7,584	361,388	16.1	3,718	171,258	28.4	29.8	26.9	29.0	3,866	108,310	4.6	5.3	3.2	81,823	10.0	6.6	21.3	7,584	279,563	18.0	4,994	163,455	17.6	2,590	116,108	18.6	41.5	61.3																
2018CY	8,395	389,838	7.9	4,056	181,899	6.2	9.8	2.2	25.4	4,339	123,285	13.8	15.3	10.7	84,657	3.5	4.6	-0.0	8,395	305,183	9.2	5,390	183,467	12.2	3,005	121,720	4.8	39.9	59.6																
2019CY	7,021	326,960	-16.1	3,219	129,853	-28.6	-34.3	-19.2	26.7	3,802	112,988	-8.4	-6.2	-13.0	84,140	-0.6	0.7	-4.6	7,021	242,842	-20.4	4,554	144,175	-21.4	2,467	98,667	-18.9	40.6	55.5																
2020CY	4,803	229,231	-29.9	2,310	84,411	-35.0	-33.1	-37.0	31.5	2,493	74,496	-34.1	-30.9	-41.4	70,324	-16.4	-11.3	-32.8	4,803	158,906	-34.6	3,009	98,232	-31.9	1,794	60,676	-38.5	38.2	53.1																
2021CY	7,367	331,492	44.6	3,592	135,812	60.9	47.0	75.8	15.1	3,775	112,462	51.0	37.8	86.6	83,218	18.3	15.5	30.2	7,367	248,275	56.2	4,227	139,430	41.9	3,140	108,843	79.4	43.8	54.7																
2022CY	7,266	372,929	12.5	3,326	154,012	13.4	20.0	7.5	20.7	3,940	130,276	15.8	10.1	27.3	88,642	6.5	4.1	15.6	7,266	284,289	14.5	3,974	159,890	14.7	3,292	124,401	14.3	43.8	54.2																
2023CY	5,968	366,732	-1.7	2,427	153,925	-0.1	3.8	-3.9	31.5	3,541	123,058	-5.5	-3.7	-8.6	89,748	1.2	1.0	2.1	5,968	276,983	-2.6	3,476	159,702	-0.1	2,492	117,281	-5.7	42.3	55.6																
2024CY	5,420	343,096	-6.4	2,383	134,386	-12.7	-8.0	-17.8	18.7	3,037	114,985	-6.6	-7.3	-5.1	93,724	4.4	5.9	-0.6	5,420	249,372	-10.0	2,945	147,475	-7.7	2,475	101,897	-13.1	40.9	53.9																
2025CY	5,409	338,497	-1.3	2,206	119,331	-11.2	-3.4	-20.7	20.0	3,203	122,723	6.7	2.9	13.5	96,443	2.9	0.7	10.9	5,409	242,054	-2.9	2,764	147,109	-0.2	2,645	94,944	-6.8	39.2	49.3																
2026/1-4	1,913	124,445	10.0	845	46,163	24.5	-2.0	74.2	28.4	1,068	43,367	0.0	-6.1	14.4	34,916	6.8	2.1	24.0	1,913	89,529	11.3	1,026	52,194	-4.3	887	37,334	44.2	41.7	51.6																
2003FY	9,695	234,415		6,010	137,826		29.5	26.4	34.2	5.0	3,686	49,699		11.8	106.4	46,878		32.0	32.0	32.0	9,695	187,530		6,885	118,169		2,812	69,355		37.0	73.5														
2004FY	11,523	309,369	32.0	6,563	178,485	29.5	26.4	34.2	5.3	4,962	69,002	38.8	11.8	106.4	61,868	32.0	32.0	32.0	11,523	247,493	32.0	7,589	144,169	22.0	3,932	103,320	49.0	41.7	72.1																
2005FY	11,803	358,722	16.0	7,172	213,131	19.4	17.9	21.6	19.9	4,630	73,841	7.0	18.5	-8.5	71,738	16.0	16.0	16.0	11,803	286,977	16.0	8,262	170,176	18.0	3,539	116,795	13.0	40.7	74.3																
2006FY	12,548	393,540	9.7	7,076	218,733	2.6	8.3	-5.2	12.7	5,474	96,092	30.1	22.9	42.9	78,703	9.7	9.7	9.7	12,548	314,829	9.7	8,537	191,161	12.3	4,012	123,664	5.9	39.3	69.5																
2007FY	12,470	393,429	-0.0	6,780	208,038	-4.9	-6.4	-2.6	17.1	5,690	106,697	11.0	-1.2	29.5	78,682	-0.0	-0.0	-0.0	12,470	314,740	-0.0	7,562	181,965	-4.8	4,910	132,771	7.4	42.2	66.1																
2008FY	7,410	251,609	-36.0	3,807	117,886	-43.3	-44.6	-41.5	22.2	3,603	76,684	-28.1	-28.9	-27.2	57,036	-27.5	-26.0	-33.5	7,410	194,574	-38.2	4,301	109,797	-39.7	3,111	84,771	-36.2	43.6	60.6																
2009FY	4,648	141,612	-43.2	2,404	54,177	-54.0	-61.7	-43.2	6.6	2,244	46,279	-39.6	-26.5	-54.3	41,130	-27.9	-30.9	-29.5	4,648	100,454	-48.4	2,609	56,335	-48.7	2,039	44,121	-48.0	43.9	53.9																
2010FY	7,017	272,132	92.7	3,789	153,228	182.8	101.1	261.5	21.4	3,228	67,522	45.9	20.3	92.1	51,384	24.9	29.5	31.4	7,017	220,748	119.8	3,385	89,221	58.4	3,632	131,528	198.1	59.6	69.4																
2011FY	7,337	316,640	16.4	3,618	180,582	17.9	8.5	22.9	26.6	3,719	81,364	20.5	16.3	25.3	54,695	6.4	0.7	31.2	7,337	261,946	18.7	3,705	99,569	11.6	3,632	162,376	23.5	62.0	68.9																
2012FY	6,177	271,364	-14.3	2,927	135,338	-25.1	-11.5	-31.4	17.6	3,250	77,514	-4.7	14.1	-24.5	58,512	7.0	3.8	17.5	6,177	212,852	-18.7	3,550	98,765	-0.8	2,627	114,087	-29.7	53.6	63.6																
2013FY	7,129	299,467	10.4	3,370	141,125	4.3	15.3	-2.4	22.5	3,759	97,989	26.4	22.1	33.2	60,355	3.1	6.4	-6.4	7,129	239,115	12.3	4,029	117,124	18.6	3,100	121,990	6.9	51.0	59.0																
2014FY	7,713	326,959	9.2	3,645	155,933	10.5	25.4	-0.2	39.2	4,068	107,083	9.3	10.9	7.0	63,942	5.9	5.3	8.2	7,713	263,016	10.0	4,699	138,443	18.2	3,014	124,573	2.1	47.4	59.3																
2015FY	7,504	341,441	4.4	3,389	146,008	-6.4	0.1	-12.3	29.4	4,115	120,997	13.0	31.1	-14.3	74,435	16.4	16.4	16.5	7,504	267,006	1.5	4,849	158,550	14.5	2,655	108,454	-12.9	40.6	54.7																
2016FY	6,970	329,946	-3.4	3,413	154,519	5.8	4.5	7.2	35.9	3,557	98,680	-18.4	-20.9	-12.8	76,750	3.1	3.0	3.4	6,970	253,198	-5.2	4,571	144,224	-9.0	2,399	108,975	0.5	43.0	61.0																
2017FY	7,902	353,897	7.3	3,819	156,608	1.4	17.6																																						